



## Tech Tip # 2 OEM Parts

(Norwalk-TechT\_P01)



Norwalk's engineered compressors require **genuine** OEM replacement parts to maintain our legacy of long life and less downtime. Do not settle for inferior quality reversed engineered parts.

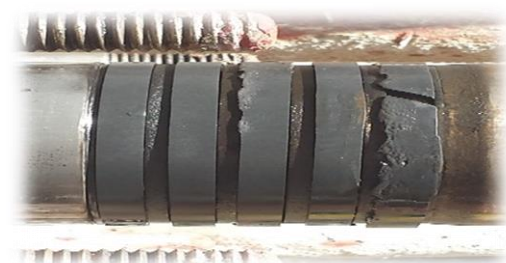
When Non-OEM or reversed engineered parts are used in one of our machines, it can become difficult to trouble shoot or repair. These parts can be of inferior quality or "off Spec" which at best can reduce the life of the component, at worst, can contribute to a major failure which may cost you thousands of dollars.

We offer a complete line of genuine, quality replacement parts backed by over 150 years in the business. Norwalk Compressor is the Original Equipment Manufacturer and uses its parts in all repairs for better performance and reliability. These components are manufactured and engineered so your Norwalk can achieve and retain optimum efficiency. When we service your compressor or components, they're brought back to our original specifications under the oversight of Norwalk Compressor Engineers. We know our compressor better than aftermarket repair shops and with many parts in stock, it allows us to provide a faster turn-around.

As the OEM we want to maintain your existing compressor(s) with genuine parts and repair service. From repairing a valve, liners for cylinders, to a complete compressor overhaul Norwalk Compressor Company will do it all at competitive prices!

So whether its piston rings, or packing rings, valves or liners, bearings or gaskets or O-ring seals, we **know** our compressors and supply only the correct material and configuration for your application.

Are you running an old Norwalk work horse! We can help you upgrade from metallic to non-metallic piston rings to enhance performance and reduce capital component wear and cost.



*Poor Quality Non-OEM piston rings used on a Norwalk Acetylene Compressor.*